

Rider's World

Competition



3

Complete
Games!

I Want to Race



End-User License Agreement

YOU SHOULD CAREFULLY READ THE FOLLOWING LICENSE AGREEMENT BEFORE INSTALLING THIS SOFTWARE PROGRAM.

With the use/installation of the CD you agree to the following license agreement: This License Agreement is a legal binding contract between you and CDV Software Entertainment AG and/or its subsidiaries for the above mentioned software product, consisting of the computer software and possible relevant media, printing material and electronic operating instructions (the "software product"). By installing the software product, copying it or using it in any other way, you are agreeing to accept the conditions of this License Agreement without change. Should you not agree to the conditions of this License Agreement, do not install this software product, but return it to where you purchased it according to their return policy.

Software product license

This software product is copyrighted (by national law and international contracts.) This software product has not been sold to you, but is only licensed to you.

License warranty.

This License Agreement warrants you a license with the following rights: Use of the delivered software. This software product may only be used by you. You are allowed to install this software product and use it on one computer only.

Description of further rights and restrictions.

Restrictions concerning Reverse Engineering, Decompilation and Disassembling. You are not allowed to change the software product, subject it to a Reverse Engineering, decompile, or disassemble it. The software product is licensed in whole. Its parts may not be separated, a may not be used on more than one computer.

Hiring out.

You may not lease, rent or lend the software product to anyone.

Software negotiation

You are permitted to relinquish all rights you are entitled to under this License Agreement completely and durably to another party, as long as you (a) do not retain any copies (of the whole software product or single parts of it), (b) relinquish the whole software product (including all covering material (in media- or form), upgrades, and the License Agreement durable and completely to the consignee.

Responsibilities/ Restrictions.

The software product contains a Level/ World Editor that allows you to create custom levels or other materials for your personal use in connection with the software product ("new materials"). You will not be entitled to use or allow third parties to use the Level/ World Editor and/or the new materials created thereby for commercial purposes including, but not limited to, distribution of new materials on a stand alone basis or packaged with other software or hardware through any and all distribution channels, including, but not limited to, retail sales and on-line electronic distribution without the express prior written consent of CDV Software Entertainment AG and its subsidiaries. You are expressly prohibited from selling and/or distributing and/or otherwise profiting from any levels, add-on packs, sequels or other items based upon or related to the software product and/or the new materials without the express

written consent of CDV Software Entertainment AG and/or its subsidiaries.

Copyright and trademark rights.

(1) The software product (inclusive all illustrations, photos, animation sequences, video, audio, music and text parts, which were embedded in the software product), as well as all the connected trade-mark and rights of usage, the packaging, printed materials and all copies of the software products are property of CDV Software Entertainment AG and/or its licensees and/or licensors.

(2) The software product is protected by copyright and trade-mark by national law, international law and international contract stipulations.

(3) With regard to archive purposes, you may handle the software product like any other by copyright protected work, and you may not make copies of the printed materials which are included with the software product, including the packaging.

(4) You may not remove, modify or change the statements about copyrights and trade-marks from the software product. This particularly refers to statements and marks on the packing and the data media, at statements which are published on the web site or which are accessible by internet, or others which are included in the software product or are created from this.

Limited Warranty.

CDV Software Entertainment AG and/or its subsidiaries warrant that the software product essentially works in agreement with the written statements being supplied with the software product from CDV Software Entertainment AG and/or its subsidiaries. This warranty covers 90 days, beginning with the date stated on the receipt.

Legal remedy of the consumer:

The responsibility of CDV Software Entertainment AG and/or its subsidiaries and its suppliers is limited to - one of the following, by choice of CDV Software Entertainment AG and/or its subsidiaries - (a) the payback of the license fee you paid, not to exceed the recommended retail price, or (b) repair or replacement of the part, or the parts of the software product if returned directly to CDV Software Entertainment AG and/or its subsidiaries including a copy of your receipt. This limited warranty is not valid, if the defect is based on an accident or misused or faulty handling. For each replaced software product, the guarantee will be for a period of an additional 30 days from the expiration of the original warranty, as long as CDV Software Entertainment AG and/or its subsidiaries determines that the software product was obtained legally.

No further warranties.

CDV Software Entertainment AG and/or its subsidiaries and its suppliers do make, as far as this is permitted by practicable law, any further warranty, as well as the liability for occurring or failure of an explicit or tacitly agreed condition. This includes especially the legal warranty for marketable quality, for the suitability for a special aim, for property, for the non-violation, concerning the software product and the stipulation, which assigns service activities, respective for shortcomings in the field of service activities.

Limited Liability.

(1) As far as this is permitted by practicable law, CDV Software Entertainment AG and/or its subsidiaries and its suppliers are not liable for special damages being based on accident, or mediate damages, for any following damages, including compensation for the loss of business, for the interruption of business operation,

for the loss of business information or any other financial damages, arising from the use or an impossibility of the use of the software product, or from the guarantee or abstained guarantee of service activities. This even applies, if CDV Software Entertainment AG and/or its subsidiaries product were directly responsible for such damages.

(2) In any case, CDV Software Entertainment AG and/or its subsidiaries_ entire liability will be, by instruction of this License Agreement, limited to the amount the purchaser actually paid for the software product. All of these restrictions are not valid, if CDV Software Entertainment AG and/or its subsidiaries caused the damage willfully.

Final Restrictions.

- (1) Should restrictions of this contract be not legally binding in whole or in part, and/or not practicable, and/or lose their legal force later, the validity of the remaining restrictions of the contracts shall remain in force. This also applies, if it should be proved, that the contract includes an unenforceable clause.
- (2) Instead of the ineffective and/or impracticable restriction because of that clause, an adequate agreement shall be valid, which, as far as legally possible, approaches best to the intended clause.

Epilepsy warning

To protect your health, take a 15 minute break after each hour of play. Do not play if you are tired or have not had enough sleep. Always play in a well-lit room and sit as far away from the screen as the cable permits.

A very small percentage of people are susceptible to epileptic seizures or loss of consciousness when exposed to certain flashing lights or light patterns in everyday life.

Such people may have a seizure whilst watching television images or playing certain video games. This may happen even if the person has no medical history of epilepsy or has never had any epileptic seizures.

If you or anyone in your family has ever had symptoms related to epilepsy (seizures or loss of consciousness) when exposed to flashing lights, consult your doctor prior to using this product.

We advise that parents should monitor the use of video games by their children. If you or your child experience any of the following symptoms: dizziness, blurred vision, eye or muscle twitches, loss of consciousness, disorientation, any involuntary movement or convulsion, while playing a video game, immediately discontinue use and consult your doctor.

Table of Contents

SYSTEM REQUIREMENTS2

SUPPORT2

INSTALLATION3

DEINSTALLATION3

START GAME4

MAIN MENU5

OPTIONS5

CONTROLS6

CREATE PLAYER8

SELECT PROFILE9

GAME MODES10

CREDITS15

System requirements

- Operating System:** Windows 2000 and XP (not Vista)
- CPU** (minimum): Pentium 4 1.8 GHz/AMD Athlon 1800+, 256 MB RAM
(recommended): Pentium 4 2.4 GHz/AMD Athlon XP 2400+, 512 MB RAM
- Video Card*** (minimum): GeForce 4/ATI Radeon 8500-class HW T&L, 64 MB
(recommended): GeForce FX/ATI Radeon 9700-class HW T&L, 128 MB
- Sound Card:** DirectX compatible
- DirectX:** 9.0c
- CD-ROM:** 8x or better
- Hard Disc Space:** 1.25 GB (250 MB per game and 500 MB for Windows swap file)
- Peripherals:** Mouse, Keyboard

*Integrated/onboard graphic cards such as Intel 845G/852/855/865G, VIA/S3G Unichrome IGP (and other models), and the SIS (all scale) will **NOT** run this game.

Support

Customer Support by e-mail: info@caipirinhagames.de

Installation

Before installation, please check the following:

Does your computer meet the minimum system requirements?

- If so, the game may be installed.
- If not, we cannot guarantee that the game will run properly.
- Remedy: Install the game on a computer which meets the minimum system requirements for this game.

Are the latest video and audio drivers installed?

- If so, the game may be installed.
- If not, we cannot guarantee that the game will run properly.
- Remedy: Download the latest video and audio drivers from the websites of the respective manufacturers. Install the drivers first, then the game.

Are any programs running in the background (for example virus scanners)?

- If not, the game may be installed.
- If not, we cannot guarantee that the installation will be completed correctly.
- Remedy: Before installation, close all programs running in the background, then begin the installation.

This CD-ROM uses an auto-run function which begins the set-up routine automatically. Should the auto-run function be deactivated, you can activate it or proceed as follows:

Insert the disc into your CD-ROM drive.

Select <Start>, <Run> and enter "D:\Setup". Note: If your CD-ROM drive is assigned to a letter other than D, substitute that letter.

Press <Enter> to begin the installation. Follow the on-screen prompts to finish installing.

Deinstallation

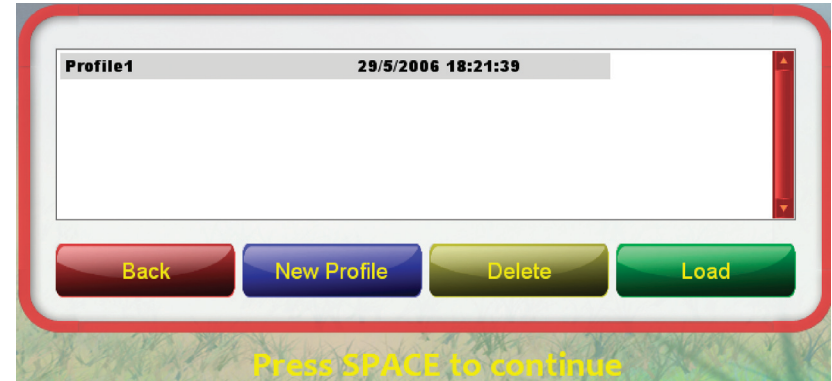
Click with the left mouse button on <Start>, <Settings> and <Control Panel> (if using Windows XP, click on <Start>, <Control Panel>. Double-click the icon <Software>, then click on "I Want to Race" to highlight the entry.

Then click on the button <Add/ Remove> (if using Windows XP, click on <Change/ Remove>) and follow the on-screen prompts to finish deinstalling.

Start game

To start the game, click on <Start>, <Programs>, <Rider's World>, <I Want to Race>, then on the icon "I Want to Race". If another file name was chosen during installation for the start menu, you will find the icons in the appropriate places.

After loading, the game starts automatically. Select the language in which you wish to play the game. Click once again with the left mouse button to open the menu for creating a player profile.



Click on "New Profile" and enter a name for your new player profile in the box. Confirm the entry by clicking "OK".

To delete a profile, highlight it in the list by clicking on it, then click on the button "Delete".

To load a profile, highlight it in the list by clicking on it, then click on the button "Load".

In order to play the game, a profile must be created and loaded. After a profile is loaded, the main menu appears on the screen.



Main Menu

The main menu contains the following options:

- Arcade
- Mission Mode
- Multiplayer
- Time Trial
- Create Player
- Best Times
- Options
- Select Profile
- Quit

Before selecting one of the game modes, you can change the game settings to suit your preferences under OPTIONS. Here you can change the settings for the graphics, the sound effects and the controls. This section also contains a brief overview (How to play). Finally, if you click on "Credits", a list of the names of the people who were involved in the production of the game is displayed.

Options:



Graphics:

Glow effect on or off: Left-click in the box to add or remove the check-mark (Glow effect is ON by default).

Full screen mode on or off: Left-click in the box to add or remove the check-mark (Full screen mode is ON by default).

Language: Click on the gray checkbox to display the available languages. Select a language by highlighting it with the mouse, then left-click to confirm the selection.

Resolution:

Click on the gray checkbox to display all available resolutions (800 x 600 is selected by default). Select a resolution by highlighting it with the mouse, then left-click to confirm the selection.

Quality: Click on the gray checkbox to display the available texture qualities (Medium is selected by default). Select a quality by highlighting it with the mouse, then left-click to confirm the selection.

Gamma: Click on the scale to adjust the gamma value. The further to the left you click, the darker the screen, the further to the right you click, the brighter it becomes (the value is preset in the middle).

Apply: In order for changes that you have made to take effect, click on the button "Apply". (The screen may go black for a few seconds while the changes are applied!)

Sound:

The volume of the sound effects, the speech and the music can be adjusted by means of slide bars.

Move the slide bar to the left to lower the volume or to the right to raise the volume.

Controls:

This shows the control presets for two players. Controls may be exchanged between players, so you can assign another set of controls to your game character.

In Single Player mode, your game character is always player 1.

The following controls are preset:

Player 1 (your game character in Single Player mode): (Keyboard)

Arrow key up – move forward

Arrow key right – move right

Arrow key left – move left

CTRL right – jump

Player 2: (Keyboard)

W - move forward

D - move right

A - move left

Space bar – jump

You can also assign a Joypad control to some or all players.

Changing the controls:

Example: You want to use the preset controls for player 2 for your game character (Player 1). In order to do this, you must first assign Player 2 other controls so that his current controls become free. Click on Player 2 to open the control assignment menu.



The current controls of player 2 are shown in white, and the assigned and therefore not (yet) selectable controls are shown in gray. The available controls are shown in lighter colors. At present, only the Joypad controls are available. If you click on one of the Joypad icons, Player 2 is assigned the Joypad. Now his previous controls are free. Now click on Player 1, then you can click on the free controls (formerly of player 2). Now player 1 has the new controls.

How to play:

This is a quick reference guide. It contains a description of the preset controls, an explanation of the apple symbol, and a brief explanation of the game modes.

Credits:

This displays a list of the people involved in the development of the game. To exit this screen, simply click with the left mouse button.

Back:

Once you have changed the settings in the Options menu, click on "Back" to return to the main menu.

Create Player

Change the appearance of your game character!



To change the appearance of your game character, left-click on Player 1.



Enter your name at the upper right.

Click on the arrows to change the following characteristics:

- Gender: Boy or girl
- Hair: Five hair colors
- Shirt: Ten styles of Shirts
- Breeches: Ten styles of breeches
- Chaps: Six styles of chaps
- Boot: Five styles of boots
- Headgear: 16 styles of headgear
- Random: Random selection
- OK: Confirm changes by clicking OK



After you have clicked OK to confirm your changes, the Create Horse screen opens.

Click on the arrows to change the following characteristics:

- Coat color: 25 colors
- Bridle: Ten types of bridle
- Saddle: 25 types of saddle
- Random: Random selection
- OK: Confirm changes by clicking OK

After you have clicked OK to confirm your changes, you return automatically to the Create Player screen. Now you can change all the other game characters in the described way or click on “Back” to return to the main menu.

Select Profile

If several players wish to play the game in Single Player mode, each player can create and save his or her own player’s profile.

Simply click on “New Profile”, enter a name for the profile and click OK. The new profile is created. To use it, highlight the name in the selection list and click on the “Load” button.

All progress made in the game is saved under the name of the currently loaded profile.

To delete an existing profile, highlight the name in the selection list and click on the “Delete” button.



The Game Modes

“Claras Racing Horses” contains five (5) game modes with three (3) difficulty levels: Easy, Normal and Hard.

- Arcade
- Mission Mode
- Multiplayer
- Time Trial

Arcade

Click in the main menu on the button “Arcade” to play a game in Arcade mode. The Track Selection menu is opened.



In Arcade mode you play on your own against seven computer opponents.

First, select one of the three difficulty levels (Easy, Normal or Hard) by clicking on the appropriate button.

Easy: Here you must complete three rounds. The artificial intelligence of the computer opponents is low.

Normal: Here you must complete five rounds. The artificial intelligence of the computer opponents is normal.

Hard: Here you must complete seven rounds. The artificial intelligence of the computer opponents is high.

At the beginning of the game, the only Track available to you is Track 1 in Spring. If you win the race, the next Track (Summer, Track 1) is unlocked.

To win a race you have to pass the finishing line in first place!

Race tracks can only be unlocked by winning races in Arcade mode. All unlocked race tracks are available in the other game modes!

Lap times and track times are recorded in the Best Times menu and can be viewed there.

Mission Mode

In the main menu, click on the button “Mission Mode”, to play the different missions.



There are eight different missions for each level of difficulty.

Time: Ride the track within the time limit.

Opponent: Cross the finish line in front of your opponent. Obstacle: Jump over all obstacles in the right way.

Coins: Collect all coins.

Slalom: Ride the slalom in the right way.

No Bumping: Don't touch your opponents.

Ball: Beware of the balls.

Challenge: A mixture of the tasks.

Multiplayer

Click in the main menu on the button “Multiplayer” to play a game with two human players together on one computer.



A selection menu appears showing the race tracks available to you which you have already unlocked in Arcade mode. Before you select one of the available race tracks, you can set the number of players and change their appearance by clicking on the button “Create Player”.

Choose a difficulty level and click on the track you wish to play.

Time Trial

Click in the main menu on the button “Time Trial” to start a race against the clock.

A selection menu appears showing the race tracks available to you which you have already unlocked in Arcade mode. A Time Trial race is always over five (5) laps, and neither human, nor computer opponents take part in it.



Best Times

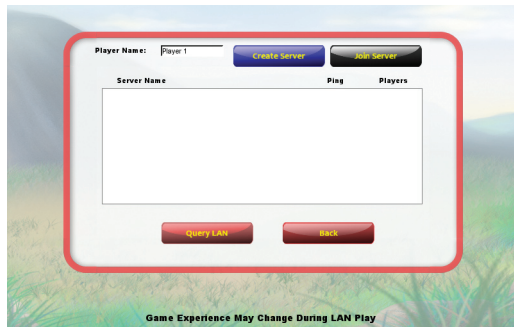
Click in the main menu on the button “Best Times” to view your track records. In the following menu you can select the game mode (Arcade, Multiplayer or Time Trial), then the track of whose best time you would like to view.

LAN Mode

Game Experience May Change During LAN Play!

The LAN Mode can be played through a local network (LAN).

Note: Each computer needs it's own copy of the game in order to play the LAN mode.

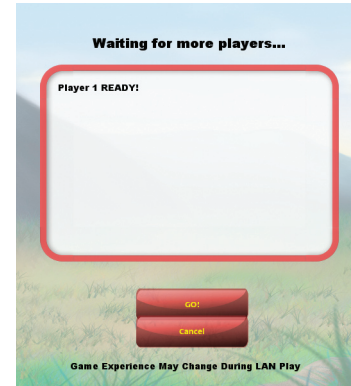


If you are using a firewall or router, you might need to configure it before the game can access the LAN. Check your firewall/router manual on how to do it.

Note: It is recommended opening or forwarding port 28000 on your router/firewall for better LAN play experience, otherwise you might experience difficulties while hosting game servers.

Click on the button “LAN Mode” in the main menu to open the server list screen.

To search for game servers in your local network (LAN), press the “Query LAN” button, and wait a few seconds.



After the query process has finished listing the available servers, you can select one and click “Join Server”. The game will pre-load the track and the wait screen will be displayed afterwards.

In the wait screen, you can see a list of the players already connected to this server. The player hosting the server must press the “GO!” button (only available to the player hosting the game) to start the race.

Note: During a race, the server will not be listed on the server list screen. Only servers waiting for players are listed.

You can create your own server using the “Create Server” button in the server list screen. You must then select a track to race on, and then you’ll see the wait screen. Wait for some players to join your game, then start the race by pressing the “GO!” button.

When the race is over, the server can select a new variation of the same track for a new race (it’s not possible to select a different track from within a race).

If the server quits the race, all players will be sent back to the main menu screen.



Credits

Preloud Entretenimento Eletronico Brasil

Executive Producer:
Joachim F. Meyer

Producer:
Claudio H P Lins

Game Design:
Joachim F. Meyer,
Claudio H P Lins

Lead Programmer:
Manuel Balbino Neto

Programmers:
Antonio Vasconcelos Cavalcante Junior,
Ivanilson Mendes Cahú da Silva,
Diogo “Kyuusho” Cunha

Lead Artist:
Claudio H P Lins

Lead Artist 2D:
Mario Ciqueira

2D Artists:
Felipe Carvalho da Silva – Pancho,
Glauco Nobre

Lead Artist 3 D:
Bruce Souza

3 D Artists:
Marcelo Santana,
Edgar Moreira

Lead Level Designer:
Paulo Souza

Level Design:
Rodrigo Ishizaka Ciarlini – RodlshiCi,
Rafael “AnGrA” Carvalho

Skybox Design:
Rafael “AnGrA” Carvalho

GUI Design:
Felipe Carvalho da Silva – Pancho, Rafael
“AnGrA” Carvalho

Music and SoundFX:
Thiago Gobet Spada

Preloud thanks:
MATER/FIR: Luiz Alberto Alvez, Celso Perez, Raul Magalhães INCUBATEP/ITEP: Geraldo Magela, Andreia Maria, Jéfferson Valadares, Scylla Costa

Caipirinha Games

Game Idea, Game Concept:
Joachim F. Meyer

Localisation:
Terence French,
Joachim F. Meyer

Voice Recordings:
toneworx GmbH Hamburg

Project Management,
Head of Production, Casting:
Heiko Rieck,
Jörg Mackensen

Voice Recording:
Stephan Grundt

Voice Editing:
Martin Schmidtke

Voice Director:
Joachim F. Meyer

Voice Actress:
Betsy Miller

Caipirinha Games thanks:
Elizabeth Meyer da Silva, Valeria Meyer da Silva, Eloisa-Nathalia Meyer da Silva, Ingeborg Meyer, Christian Meyer, André Matos, Nicole Dittes, Arne Herbst, Frank Lucht, Bernd Möller, Hauke Lulies, Maria Abigail de Oliveira, André Oliveira.

CDV Software Entertainment USA

President and CEO:
Tom Gross

Director of Public Relations and Marketing:
Mario Kroll

QA and Customer Service Manager:
David Green

Marketing and Production Manager:
Phillip Hall

Office Manager:
Barbara Wendel

Public Relations Account Manager:
Ted Brockwood, Calico Media

Print Advertising and Additional Graphic Design:
factor[e] design initiative

Media Planning and Advertising Placement:
TangibleMedia

Special Thanks:
William Smeed and the CDV English language forum moderators; Stephen Poole and Michael Eckenfels; Sara and the Antec team; NVIDIA; Sandra and AMD/ATI; Claudina and team at Alienware; Michael and Kate of MMPR; the staff of the Vignette Restaurant and Snafu’s; The Orchard (San Francisco) and Roger Smith Hotels (New York City); as well as our friends and families.

CDV

PR Manager:
Bernd Berheide

Marketing Manager:
Randy Dohack

Product Manager:
Roger Joswig

Chief Graphic Designer:
Oliver Krainhöfner

Technical Engineer:
Thomas Kröll

Senior QA Manager:
Thomas Heil

Leadtester:
Andre Dordel,
Daniel Schömperten,
Sebastian Reichert

QA Tester: Bernd Heumann, Christian Oly,
Daniel Mrugala, Daniel Pathmaperuma,
Daniela Grebe, Frederik Western, Michael
Denk, Michael Hoferer, Michael Schulz,
Oliver Schuß, Pascal Renschler, Patrick
Sälzler, Pedro Pinto, Ralf Leichtle, Roland
Thimister, Sebastian Merkel, Stefan Kostov,
Stefan Pröll, Stefan Schreiber, Sven Burst,
Thomas Heilbronner, Thorsten Of, Torsten
Biller



© 2007 Caipirinha Games under exclusive license to CDV Software Entertainment USA.
All rights reserved. CDV, the CDV logo and Rider's World: I Want to Race are either
registered trademarks or trademarks of CDV Software Entertainment AG,
CDV Software Entertainment USA or Caipirinha Games in the US and/or other countries.
The Preloud Electronic Entertainment logo is a trademark of Preloud Electronic Entertainment.
All other logos and trademarks are property of their respective owners.

preloud
ELECTRONIC ENTERTAINMENT

Caipirinha
GAMES

cdv
WWW.CDVUS.COM